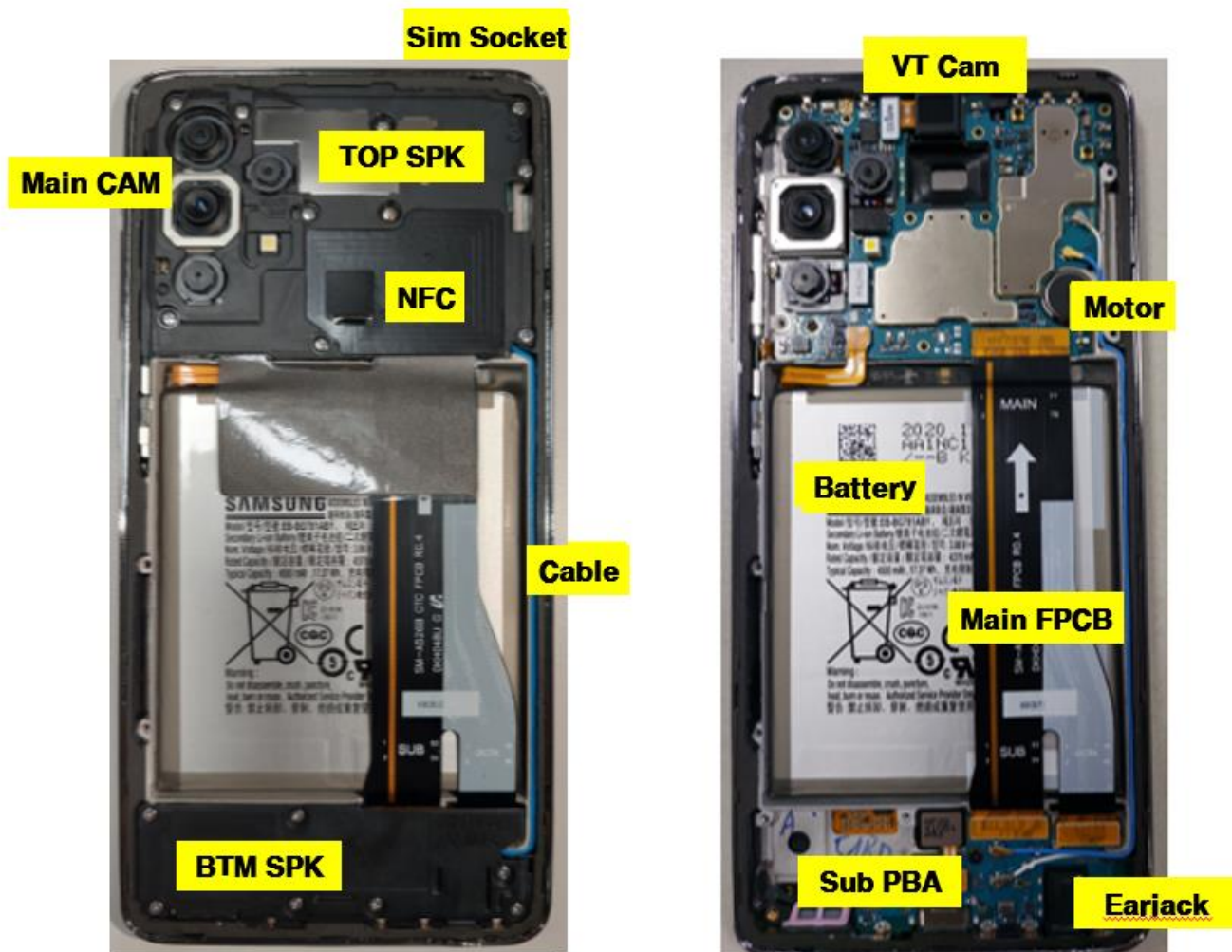


---

## 7. Level 2 Repair

---

### 7-1. Components on the Rear Case



---

## 7. Level 2 Repair

---

### 7-2. Pre-requisite


	
<b>Tweezers / Disass'y Stick / Screw Driver</b>	<b>Anti-static Gloves</b>
	
<b>Anti-static Mat</b>	<b>AOD</b>
	
<b>Ethyl Alcohol</b>	<b>Cotton Swab</b>

---

## 7. Level 2 Repair



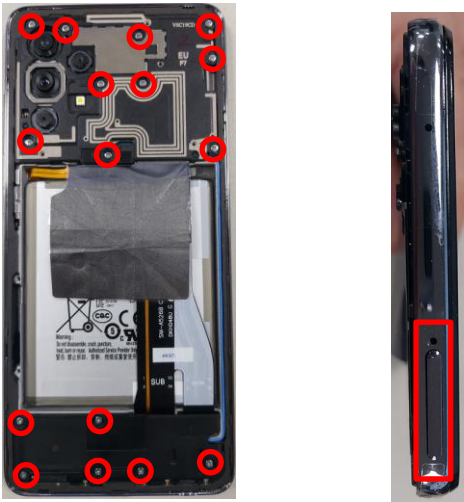

---

### 7-3. Parts which must be changed after repair

BOM description & part code	Image	Remarks
<b>TAPE WP BACKCOVER</b> <b>[GH02-22419A]</b>		<b>Replace for</b> <b>Back Cover repair</b>

## 7. Level 2 Repair

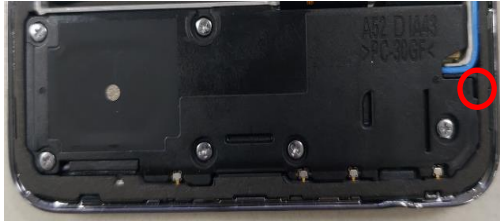
### 7-4. Disassembly

<div data-bbox="127 313 204 376">1</div> <div data-bbox="231 324 742 526"><p>Put the device in the chamber as following below heating condition.</p><ul style="list-style-type: none"><li>- SOC 68%↓: 70℃/10~20 minute</li><li>- SOC 68%↑: 70℃/10~20 minute</li></ul><p>※ Please confirm the heating condition released lastly, and follow it.</p></div> <div data-bbox="258 566 660 1043"></div>	<div data-bbox="834 313 911 376">2</div> <div data-bbox="941 324 1492 436"><p>Detach the Back Glass. Detach the left side of Back glass.</p></div> <div data-bbox="1037 465 1311 1023"></div>
<p>※ Caution Be care of scratch</p>	<p>※ Caution Be care of scratch</p>
<div data-bbox="127 1189 204 1252">3</div> <div data-bbox="231 1200 778 1294"><p>Unscrew 16 Point and disassemble SIM Tray from device</p></div> <div data-bbox="185 1317 651 1816"></div>	<div data-bbox="834 1189 911 1252">4</div> <div data-bbox="941 1200 1492 1294"><p>Disassemble Upper Rear. (Use disassemble hole, left side of Rear to detach it)</p></div> <div data-bbox="919 1332 1420 1711"></div> <div data-bbox="949 1758 1433 1818"><p>Rear Top disassemble hole.</p></div>
<p>※ Caution Be care of Rear damage.</p>	<p>※ Caution</p> <ol style="list-style-type: none"><li>1) Be care of scratch.</li><li>2) Be care of Rear and connector damage.</li></ol>

## 7. Level 2 Repair

5

Finally Disassemble Rear of bottom side.  
(Use disassemble hole, right side of Rear to detach it)



Rear Top disassemble hole.

6

Unscrew Main PBA 1point.



### ※ Caution

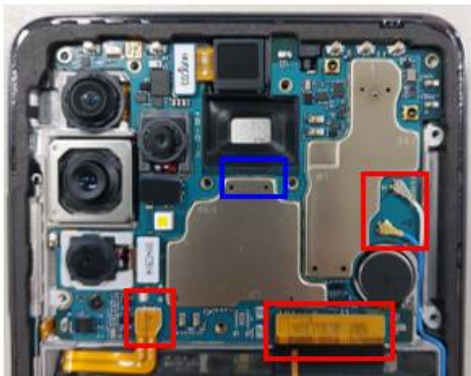
- 1) Be care not to damage Battery.
- 2) Be care not to damage Rear, Connectors, PBA.
- 3) Be careful of scratch.

### ※ Caution

Be careful not to damage the Main PBA and components.

7

Disassemble 2 point connectors and 2 point cables of PBA and detach PBA



Main PBA disassemble hole (blue area)

8

Unscrew Sub PBA 1 point



### ※ Caution

- 1) Be care of scratch.
- 2) Be care of connector damage.

### ※ Caution

Be careful not to damage the Sub PBA and components.



## 7. Level 2 Repair

9

Disassemble 3 point connectors and 2 point cables of Sub PBA and detach Sub PBA.

- Detach Finger sensor module
- Detach Sub PBA



10

Detach other components.



※ Caution

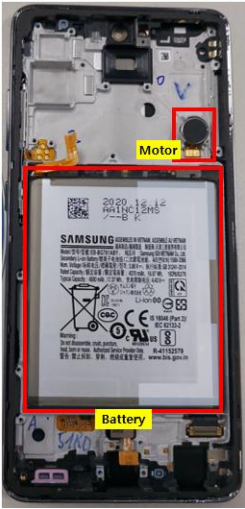
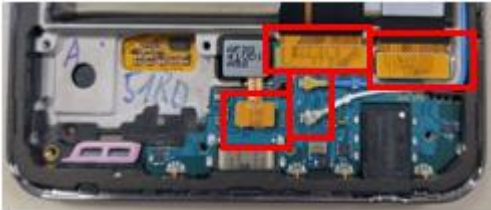

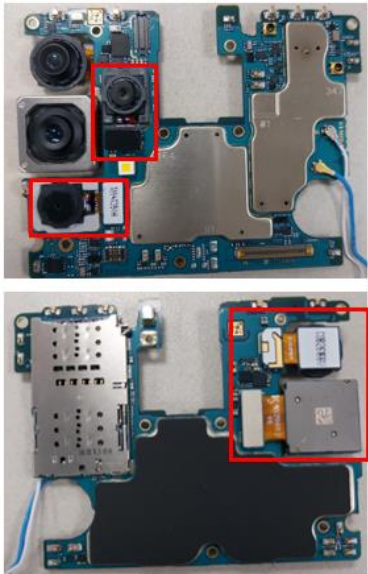
Be care of Ear jack connector.

※ Caution

Be care of SUB PBA damage.

## 7. Level 2 Repair

### 7-5. Assembly

<div data-bbox="135 353 210 416">1</div> <div data-bbox="233 353 794 459"><p>Attach components on Front. (RCV module, Motor, Battery)</p></div> <div data-bbox="343 465 588 972"></div>	<div data-bbox="826 376 901 439">2</div> <div data-bbox="928 353 1477 524"><p>Attach SUB PBA and Finger sensor module on Front.</p><p>Attach OCTA conn, Finger sensor conn, Main Fpcb conn, and Cables.</p></div> <div data-bbox="941 589 1434 797"></div>
<p>※ Caution</p> <p>1) Be care of FPCB damage and tilt. 2) Be care of press power/time.</p>	<p>※ Caution</p> <p>Be care of FPCB and PBA damage.</p>
<div data-bbox="127 1178 202 1240">3</div> <div data-bbox="223 1169 794 1263"><p>Screw 1 point on Sub PBA. (* Torque Value : 1.1kgf± 7%)</p></div> <div data-bbox="135 1379 785 1653"></div>	<div data-bbox="826 1160 901 1223">4</div> <div data-bbox="928 1151 1493 1232"><p>Attach Main Cam on PBA.</p></div> <div data-bbox="981 1261 1350 1832"></div>
<p>※ Caution</p> <p>Be care of chip damage nearby screw point.</p>	<p>※ Caution</p> <p>Be care of press power/time.</p>

## 7. Level 2 Repair

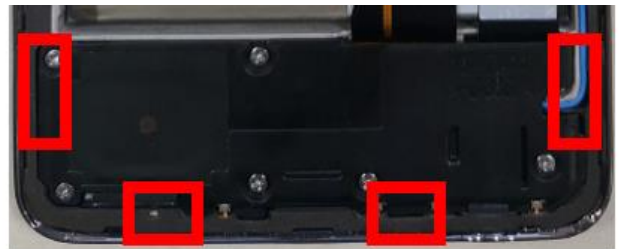
5

1. Assemble PBA to Front case, and screw 1 point on PBA (\* Torque Value : 1.1kgf $\pm$ 7%)
2. Attach and assemble 2 coaxial cables on the right side of front
3. Attach VT cam and connect connectors and cables. (Battery conn, MAIN FPCB conn, 2 coaxial cables)



6

Assemble the Bottom REAR in sequence of bottom part first and top part last.



### ※ Caution

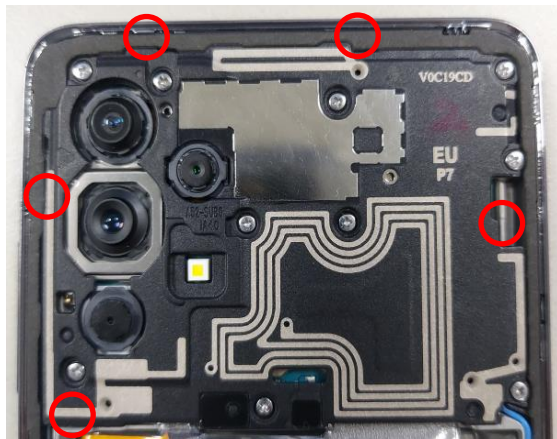
- 1) Be care of scratch.
- 2) Assemble White cable first and blue cable later.
- 3) Be care of coaxial cables damage.
- 4) Be care of PBA and Fpcb damage.

### ※ Caution

- 1) Assemble bottom hook of Rear Bottom first, and then side hooks later.
- 2) Be care of scratch and Sub PBA damage.

7

Assemble the TOP REAR Assy



8

Screw insertion 16 Point.

\* Torque Value

- 10 points on Rear Top : 1.3kgf $\pm$ 7%
- 6 points on Rear Btm : 1.2kgf $\pm$ 7%



### ※ Caution

- 1) Assemble top hooks of Rear Top first, and then right side hook and left side hooks later.
- 2) Be care of scratch and Main PBA damage.

### ※ Caution

Be care of Rear damage.



## 7. Level 2 Repair

9

Attach the back cover outside tape on the back cover by hands.

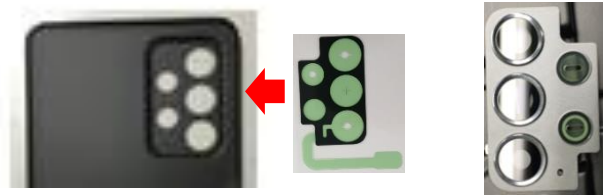
Gently press all adhesive parts of tape using disassembly stick or hands.



10

Attach "Tape Cam Deco" on the back cover by hands and then attach Cam deco assy, if Cam deco is disassembled.

If Cam deco was not disassembled, this step is unnecessary.



⚠ Caution

Fit the tapes precisely to the inner area of back cover.  
Don't touch the attach side of tape for waterproof.

※ Caution

Be care of scratch and tilt.  
Don't touch the attach side of tape for waterproof.

11

Attach the back glass on the back of Front case.



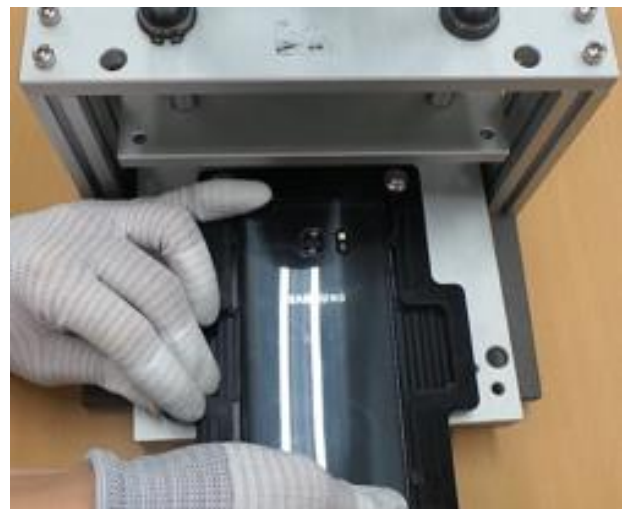
12

Press Back Glass.

- Pressing force : 1 N

- Pressing time : 60 Sec.

SIM Tray must be separated before pressing the backglass or the OCTA



※ Caution

Be care of scratch and tilt.

※ Caution

Be care of scratch.